



# Fluomac



CE

*Istruzioni per l'uso*  
*Owner's manual*  
*Bedienungsanweisung*

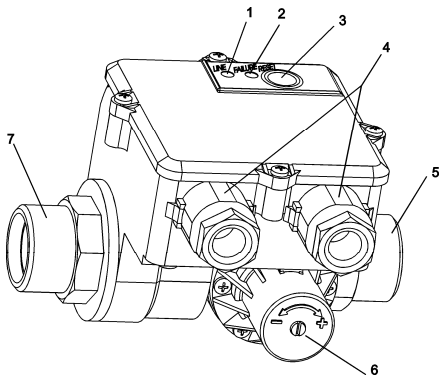
*Mode d'emploi*  
*Instrucciones para el uso*  
*Instruções para o uso*

**ITALTECNICA S.r.l.** Viale Europa 31 35020 TRIBANO (Padova)

Italy Telefono ++39/049/9585388 – Fax ++39/049/5342439

E-mail: [italtecnica@italtecnica.com](mailto:italtecnica@italtecnica.com) [Http://www.italtecnica.com](http://www.italtecnica.com)

## INSTRUCTIONS FOR USE



### FUNCTIONAL PARTS

1.	Grid voltage indicator	5.	Outlet with 1" male threaded connection
2.	Dry stop indicator	6.	Operating pressure setting screw
3.	RESET button	7.	Inlet with 1" male threaded connection
4.	Cable clamps		

### 1. FEATURES

Fluomac is designed to automatize the starting and stopping operations of an electric pump with regard to a drop in pressure (opening of the taps) and to the stopping of the flow through the system (closing of the taps), respectively. Furthermore, Fluomac stops the pump when senses the lack of water flow, preventing it from any damaging dry operation.

It is advisable using Fluomac with water systems whose water is without sediments. In case it is not possible, it is necessary to install a filter before the inlet of the device.

**PLEASE READ THIS INSTRUCTION LEAFLET CAREFULLY THROUGH BEFORE INSTALLING AND OPERATING THE DEVICE.**

## **2. SAFETY REGULATIONS**



To avoid shocks and fire risks, read and follow closely the following instructions:

- Always unplug the device from the mains before carrying out any work on it.
- Be sure that the electric line connecting the device to the mains and the extension leads have a cross-section suitable for pump power and be sure that the electrical connections are far away from any water source.
- When Fluomac is used for swimming pools, ponds and fountains it is necessary to use an automatic RCD with IDn=30mA protection.

**WARNING:** when the pump stops the pipes are under pressure consequently we recommend opening a tap to discharge the system before carrying out any work.

## **3. INSTALLATION**

1. Install Fluomac anywhere between the pump and the first service outlet so that the arrow on the case is pointing in the same direction as the fluid flowing through the pipe. Check perfect water tightness of all water connections. If you are using a pump with a pressure higher than 10 bar, install a pressure reducer on the Fluomac's inlet.
2. For the electrical connection of the version supplied without electric leads, follow the wiring diagram on the printed circuit board cover. Furthermore, in case of use of a pump with power higher than ½ Hp and the ambient temperature is higher than 25°C it is necessary to wire Fluomac with cables with a thermic resistance not inferior to 99°C. Use only suitable wire nippers to wire the Fastons. If the leads are included, simply connect the pump's power plug to the Fluomac socket and its own power plug to a current outlet.

3. Operating pressure is pre-set at 1.5 bar which is the optimum value for the majority of applications. Minimum operating pressure can be adjusted as needed by turning the screw situated on the side flange marked with + and -.

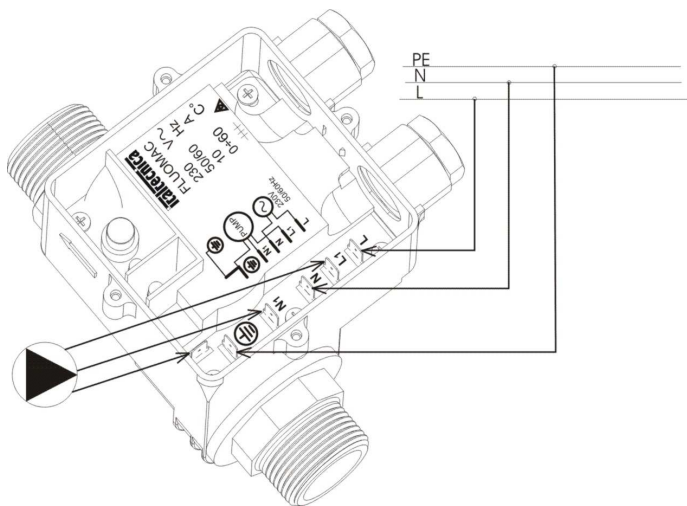
**WARNING: TO ENSURE CORRECT WORKING OF THE FLUOMAC, MAXIMUM PUMP PRESSURE MUST BE AT LEAST 0,6 BAR HIGHER THAN FLUOMAC OPERATING PRESSURE.**

#### **4. STARTING FLUOMAC**

**WARNING:** whenever the level of the priming water is lower than the level of the water where the pump is placed, a suction line equipped with an antbackflow foot valve is absolutely essential. This valve allows the line to be filled when it is first used and prevents it from being emptied when the pump stops.

1. Before turning on, fill up the suction pipe and pump with water and then start the pump by connecting the Fluomac power plug to a current outlet; when the pump stops open the tap situated higher up.
2. Installation is correct if the flow from the tap is regular and if the pump works continuously. If there is no water you can try to make the pump work without interruption - for a period of time longer than the device's working time - by keeping the RESET button depressed. If the problem persists, disconnect the Fluomac and repeat the procedure from point 1.

**Dry stop:** The red FAILURE LED lits up with motor off to indicate a dry stop. To start the system again press the RESET button after having checked the presence of water in the suction pipe.



## 5. WARRANTY

The warranty is valid for a period of 24 months starting from the purchasing date. The warranty is acknowledged if the device shows no signs of tampering and if all the manufacturer's instructions were followed during the installing and operating phases.

## 6. POSSIBLE PROBLEMS

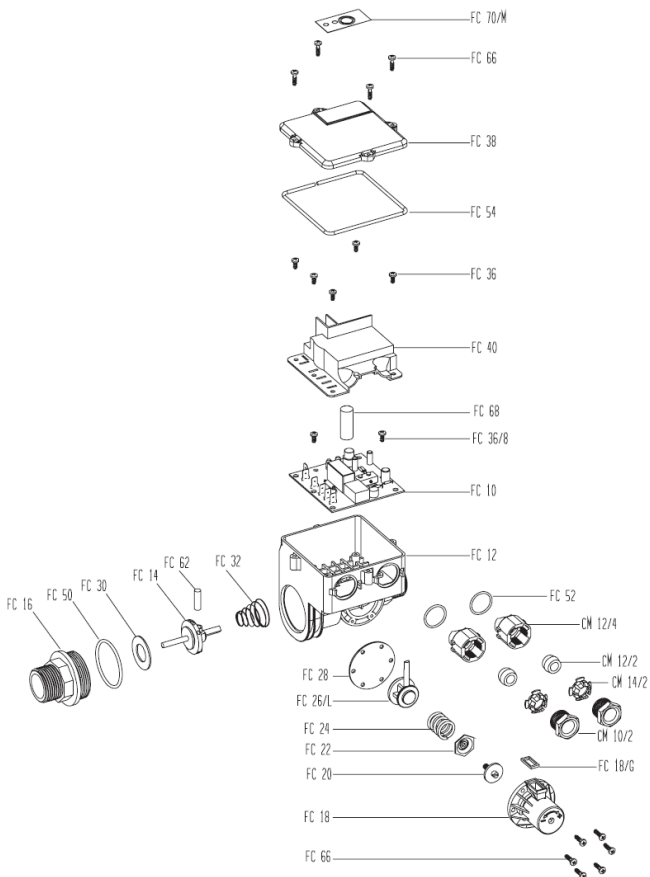
PROBLEM	POSSIBLE CAUSES	SOLUTION
The pump switches on and off continuously.	Leaks in the system.	Check all hydraulic connections.
Dry stop even if there is water in the suction pipe.	Operating pressure too high.	Turn screw 6 anticlockwise (-) direction. Press the RESET button and make sure the red light is off when the pump stops.
The pump do not start again.	<ol style="list-style-type: none"> <li>1.Mains voltage failure.</li> <li>2.The drop between the Fluomac and one of the tap is too great.</li> <li>3.The pump is out of order.</li> <li>4.Fluomac is malfunctioning.</li> </ol>	<ol style="list-style-type: none"> <li>1.Check the electrical connections.</li> <li>2.Turn screw 6 in clockwise (+) to increase the operating pressure.</li> <li>3.Consult an electrician.</li> <li>4.Consult your dealer.</li> </ol>
The pump does not stop.	<ol style="list-style-type: none"> <li>1.There are big leaks in the system.</li> <li>2.Fluomac is malfunctioning.</li> </ol>	<ol style="list-style-type: none"> <li>1.Check the system.</li> <li>2. Consult your dealer.</li> </ol>

## 7. TECHNICAL DATA

Power source: .....	110-230 VAC ±10% 50/60Hz
Max. current: .....	10 A
Operating pressure range: .....	1÷3,5 bar / 14.5÷50,65 psi
Pre-set operating pressure: .....	1,5 bar / 21,8 psi
Max. allowable pressure: .....	10 bar / 145 psi
Max. liquid temperature: .....	55°C/130°F
Pressure Drop to 100l/min: .....	0,7bar
Connections: .....	1" GAS male
Protection level: . . . . .	IP 54
Type (Re. EN 60730-1): .....	1.B

**PARTI DI RICAMBIO  
SPARE PARTS  
ERSATZTEILE**

**PIECES DE RECHANGE  
PARTES DE RECAMBIO  
PEÇAS DE REPOSIÇÃO**



**Prova d'acquisto  
Proof of purchase  
Quittung  
Épreuve d'achat  
Proba de compra  
Recibo de compra**

**Timbro e firma del rivenditore  
Dealer's stamp and signature  
Stempel und Unterschrift  
Cachet et signature du revendeur  
Firma y timbre del revendedor  
Carimbo e assinatura revendedor**





